

DIRECTOR™



Data Monitoring Switch

Features

- Tap, Aggregation, Regeneration, Matrix Switching, and smart filtering in a single device
- Four 10-Gigabit XFP ports and 34 1-Gigabit ports
- In-line and SPAN network modules
- SFP monitor port interfaces
- Daisy-chain up to 10 chassis using two 10-gigabit ports (rear of chassis)
- TapFlow™ multi-layer filtering engine
- More than 1,000 filter elements per chassis
- RMON statistics (packet count, utilization, etc.)
- Indigo™ management software
- USB software upload port

Benefits

- Leverages monitoring tool investments
- Improves network visibility and security threat management
- Relieves oversubscribed tools by filtering
- Compatible with monitoring tools and intrusion detection and prevention systems from all major manufacturers

Net Optics Director is a “Smart Filtering” appliance that directs traffic of interest to monitoring tools. Monitor as many as 26 SPAN ports or 13 in-line links with up to 11 monitoring tools.

TapFlow™ filtering technology enables you to select traffic of interest for each tool based on protocols, IP addresses, ports, and VLANs.



Director provides access capabilities you need to leverage your monitoring tools across your entire network while streamlining the amount of data the tools need to process. It is a versatile component of a monitoring access platform (MAP) for improved network visibility and security threat management across the entire network.

Efficient Monitoring Access

Today’s networks are delivering more services and carrying greater amounts of multi-protocol traffic at higher data rates. A single set of wires now carries data, voice, and streaming video simultaneously. Increased security threats and tighter regulatory compliance requirements further complicate network operations.

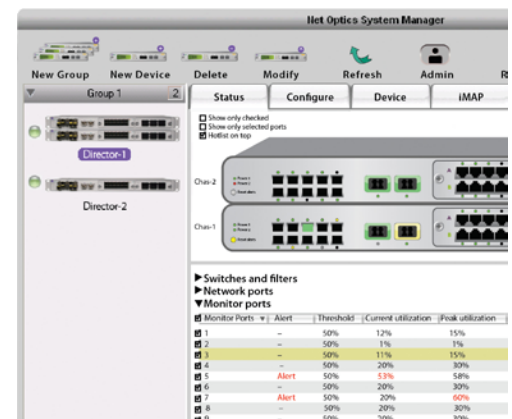
Maintaining network security and performance in this environment means monitoring more points in the network, for more detailed information, and for different types of data. As a result, monitoring tools are oversubscribed and multiple groups with various responsibilities compete for use of the tools and access points.

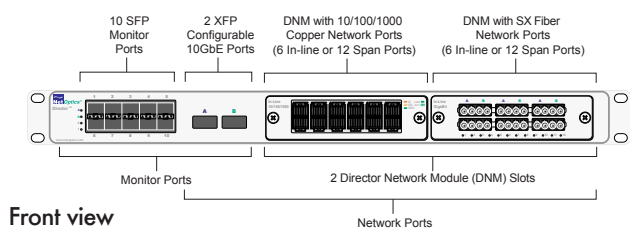
Director answers the need for more efficient monitoring access by enabling a pool of

tools to be deployed across a large number of network links, with remote, centralized control of exactly which traffic is directed to each tool. Using browser-based or platform-based software with friendly graphical user interfaces, tools are easily and instantly moved from one link or set of links to another without unplugging and plugging cables and physically moving devices. There is no need to wait for a maintenance window or get approvals for changing the network configuration, because once Director is in place, it is completely transparent to the network. Even if power is removed from both of the unit’s redundant power supplies, the fully passive design ensures that in-line network links remain open and network traffic keeps flowing.

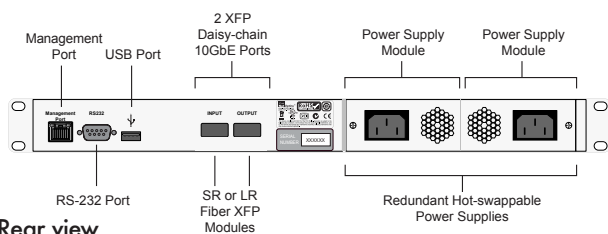
Indigo™ Management Software

Net Optics provides a versatile console for managing and monitoring any number of Director and other Net Optics devices. Its easy-to-use, Windows-based graphical user interface (System Manager) makes configuring and monitoring Director simple, and password protection ensures security.

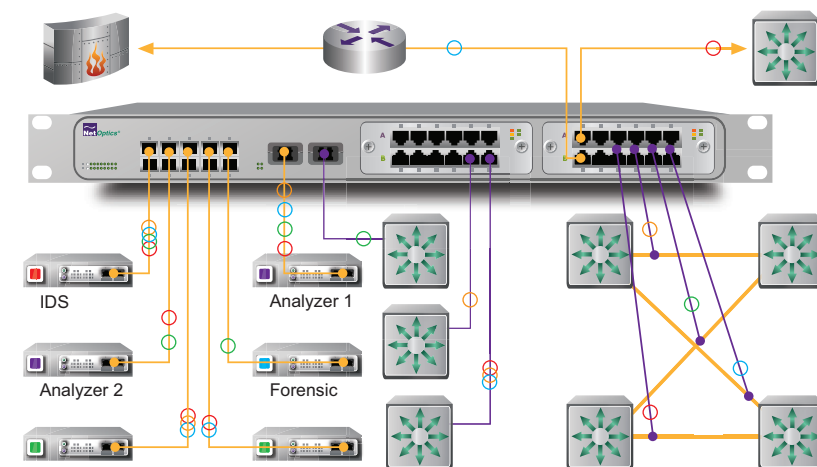




Front view



Rear view



Application Diagram

Specifications, chassis

Operating

Operating Temperature: 0°C to 40°C

Storage Temperature: -10°C to 70°C

Relative Humidity: 10% min, 95% max, non-condensing

Mechanical

Dimensions: 1.75" high x 25" deep x 19" wide

Mounting: Surface or 19" rack mount (1U)

Weight:

DIR-7400 (25lbs)

DIR-5400 (24lbs)

DIR-3400 (23lbs)

DNM (1.5lbs)

Connectors

Network Port Slots: (2) Director Network Module (DNM)

Monitor Ports: (10) SFP

Configurable 10Gigabit Ports: (2) XFP

Daisy-chain (uplink) 10Gigabit Ports: (2) XFP

Management Port: (1) RJ45 10/100 Copper Network

Configuration (CLI) Port: (1) RS-232 DB9

USB Port: (1) Supports thumb drives for software upload

Power: (2) AC universal

Electrical Specifications

Power: 100-240VAC, 2A, 47-63Hz (Japan: 100-125VAC, ~120 VA, 50-60Hz)

DC Input: -48VDC nominal, -36 to -72VDC, 6.0A

DC Receptacle: Terminal peak, 12-14 gauge wire

Indicators

(All ports) Link LEDs (with speed indication on Copper ports),

(All ports) Activity LEDs

(1) Alarm LED

(2) Power LEDs

Performance

Hardware throughput: 74Gbps, 54Gbps and 34Gbps

TapFlow: More than 1,000 filter elements per chassis; filter by IP source address, IP destination address, MAC source address, MAC destination address, source port, destination port, protocol, network port or port group, VLAN, utilization threshold

RMON statistics: Current utilization, peak utilization, peak time, total packets, total bytes, CRC errors, collision packets, oversize packets, undersize packets

Alarms: Programmable utilization threshold alarm for each network and monitor port

Indigo™ Management Software

Net Optics Web Manager—compatible with all major Web browsers

Net Optics System Manager—compatible with Windows XP, Windows 2000, and Windows 98

SNMP v3 support

Certifications

Fully RoHS compliant

Part Numbers

DIR-7400: Director Main Chassis with 10 SFP monitor ports, 2 XFP 10GbE ports, 2 XFP uplink ports

DIR-5400: Director Main Chassis with 10 SFP monitor ports, 2 XFP uplink ports

DIR-3400: Director Main Chassis with 10 SFP monitor ports

Specifications, DNM

Copper Interfaces

(12) RJ45 Network Ports 10/100/1000Mbps

(6) In-line or (12) SPAN depending on model

22-24 AWG unshielded twisted pair cable, CAT5e or better recommended

Fiber Optic Interfaces

(12) Gigabit SX Network Ports, LC type

(6) In-line or (12) SPAN depending on model

Fiber Type: Corning Multimode 50 or 62.5/125µm, 850 nm

Transceiver: GigaBit SX 850nm, VCSEL, supports 62.5/125µm

Transceiver: GigaBit LX 1310nm or 1550nm, VCSEL, supports 8.5/125µm

Safety: Class 1, eye-safe, laser emitter type; conforms to the applicable requirements per US 21 CFR (J) and EN 60825-1; also UL 1950 applications

Part Numbers

10/100/1000 Copper In-Line Module: DNM-100

10/100/1000 Copper Span Module: DNM-110

GigaBit SX Fiber In-Line Module: DNM-200

GigaBit 50µm SX Fiber In-Line Module: DNM-220

GigaBit SX Fiber Span Module: DNM-210

GigaBit 50µm SX Fiber Span Module: DNM-230

GigaBit 1310nm LX Fiber In-Line Module: DNM-300

GigaBit 1550nm ZX Fiber In-Line Module: DNM-320

GigaBit 1310nm LX Fiber Span Module: DNM-310

GigaBit 1550nm ZX Fiber Span Module: DNM-330



Your Partner in Switzerland:

Omicron AG
8304 Wallisellen
E-Mail: mail@omicron.ch
Web: http://www.omicron.ch



5303 Betsy Ross Drive • Santa Clara, CA 95054
+1 (408) 737-7777

Net Optics® is a trademark of Net Optics, Inc.
Copyright 2009 Net Optics, Inc. All rights reserved.